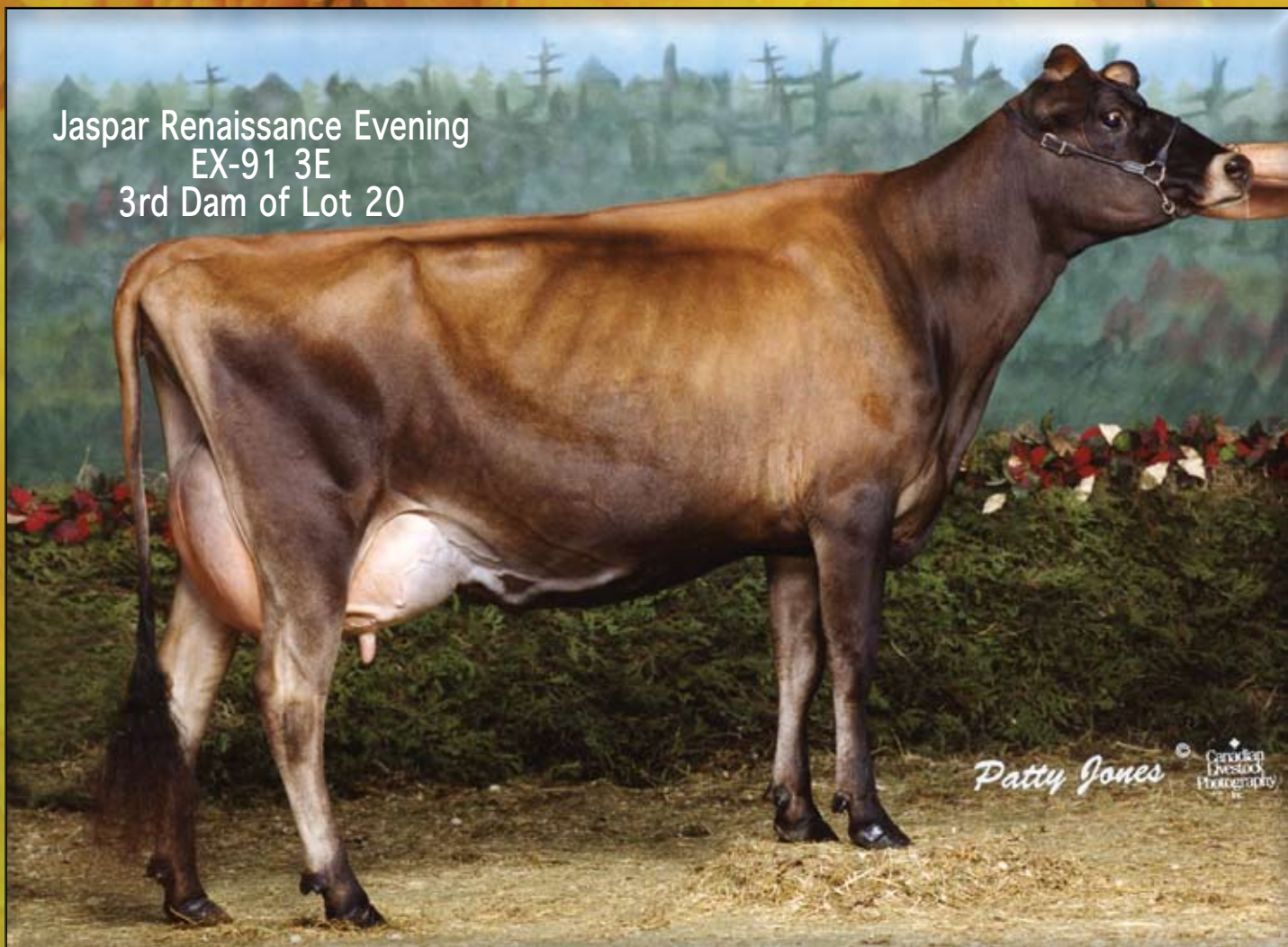


Jaspar Renaissance Evening
EX-91 3E
3rd Dam of Lot 20



LOT 20

BRIDON VERIFY ELEVATE

9851752C Born: July 16, 2008
Jr. 2-Year-Old Due 9/4/2010 to Bridon Comerica Boyd

Bridon Farms Inc.
Paris, ON Canada
519/632-7992

ARETHUSA SAMBO VERIFY-ET 115016220C



BRIDON RES EXIST 7591907C

CAN VG 85 2-05
2-01 2 305 11942 5.0 489 4.1 489
3-03 2 305 14387 4.9 712 4.0 578
4-03 2 275 17538 5.1 906 3.9 699 (Inc)

LESTER SAMBO 658836

HURONIA CENTURION VERONICA 10206465

EX-97 8-09
4-09 2 365 24568 5.7 1399 4.0 977

RAPID BAY RESSURECTION-ET 101735533

BRIDON AW ELECTRA-ET 8422973C

CAN EX-90 5E 8-08
1-11 2 305 14764 5.3 789 3.8 564
3-00 2 305 17721 5.4 957 3.8 675

Maternal Sisters:

Bridon Remake Edge (EX-92 2E)
Bridon Patrick Everready (EX-90)
Bridon Paramount Evania (EX-90 2E)
Bridon LS Echo (EX-91)

3rd Dam:

Jasper Renaissance's Evening
(CAN EX-91 3E)
6-11 2 305 22979 6.0 1375 3.8 875
Res. Grand RAWF & WDE '99
Intermediate Champ WDE '99
Intermediate Champ RAWF '97/'98
3 Time All-Canadian Milking Form
4th Dam: Elm Line Bruces Eva 7U
(VG-85)

5-03 2 305 14707 5.3 774 3.9 571
5th Dam: Elmline Title's Eliza 14R
(EX 1 @ 3-10)

9-06 2 305 13821 4.8 664 3.6 503
Lifetime Production Award, Level 1

6th Dam: Elmline King's Eva
(CAN EX-90)

7th Dam: Elmline Sparkie's Ellen
(CAN VG-86)